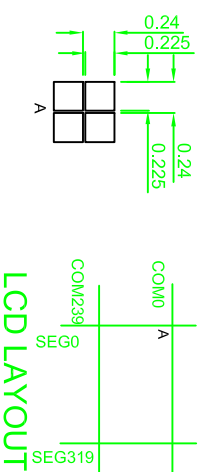
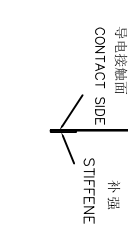
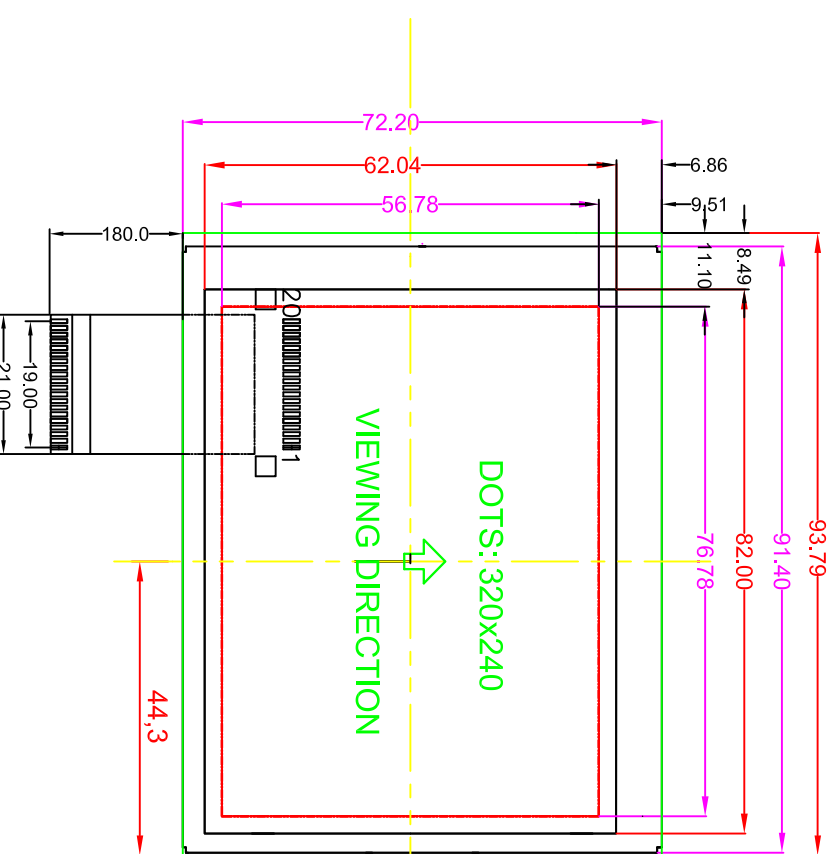
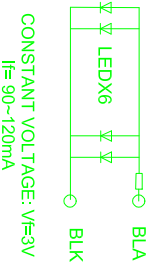
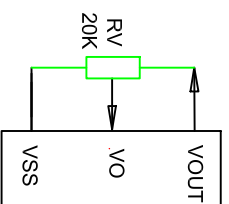


Customer approval :

CIRCUIT DIAGRAM



SPECIFICATION:

- 1). Driving:Dots:320*240,Duty:1/240,Bias:1/17,VOUT:25.30V,V0:21.70V,VDD:5.0V
- 2). VIEWING DIRECTION: 6 O'CLOCK
- 3). Display mode: FSTN/Transflective/Positive
- 4). Operating temp.: -20°C~+70°C
Storage temp.: -30°C~+80°C
- 5). Control IC: S1D13700
- 6). BACKLIGHT Type: White LEDX6 BLA: 5.0V 90MA
- 7). DIMENSIONS WITH MARK "***" ARE IMPORTANT WITH MARK "(" ARE REFERENCED
- 8). All the raw materials are RoHS compliant

G2432W21

PIN	1	2	3	4	5	6	7	8	9	10	11	12	13	14	15	16	17	18	19	20
K4	VSS	VDD	NC	AO	WR	R/D	DB0	DB1	DB2	DB3	DB4	DB5	DB6	DB7	/CS	/RES	VO	VO	BLA	BLK



深圳市三元晶科技有限公司
ShenZhen TCCLCD HI-Tech Co., Ltd.

REV	REVISION RECORD	DATE	MODEL NO.	CHECKED BY	DRAWING BY	GENERAL TOL:	UNIT:
A	FIRST ISSUE	2015/11/03	模组型号	审核	绘图	未注公差	mm
B			SYG320240L13V10-5C15K1LN6R-85WCP1	检查			
C				Francis	Luoxian		
D							

